

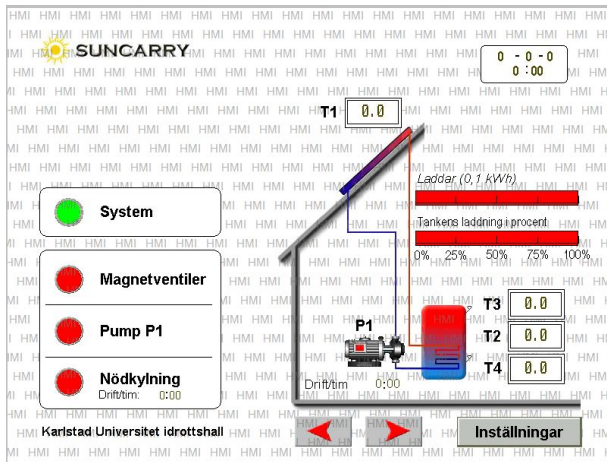
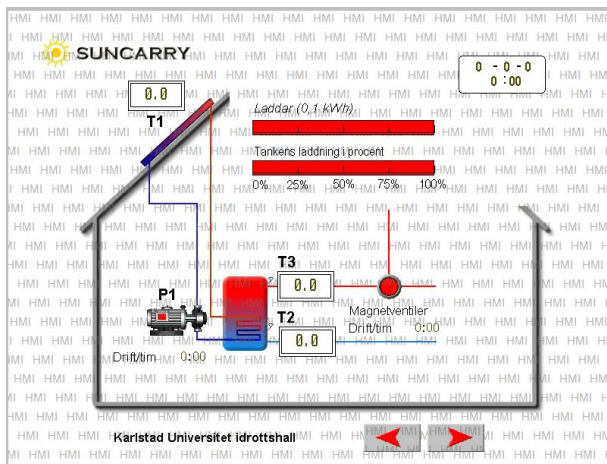


PLC Manual

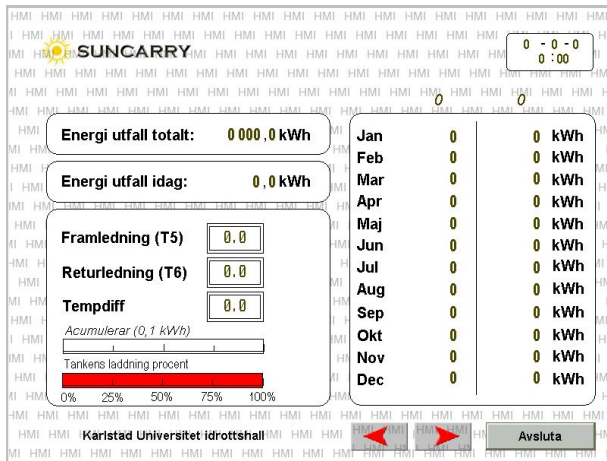
Click on the arrow keys to change menus  



Systems, operating temperatures, active functions, charge, energy

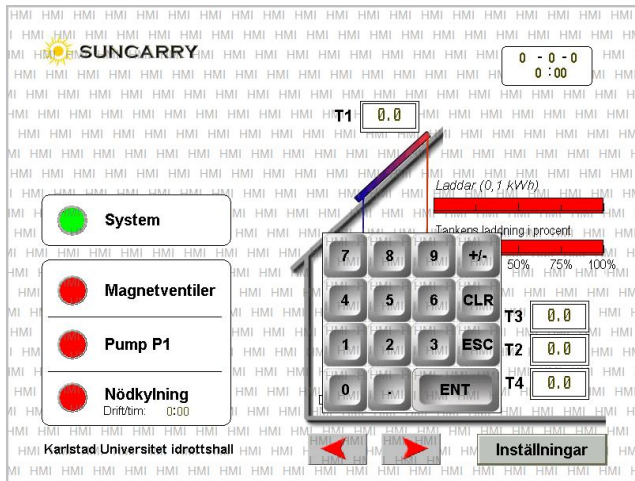


Operating temperatures, active functions, charge, energy

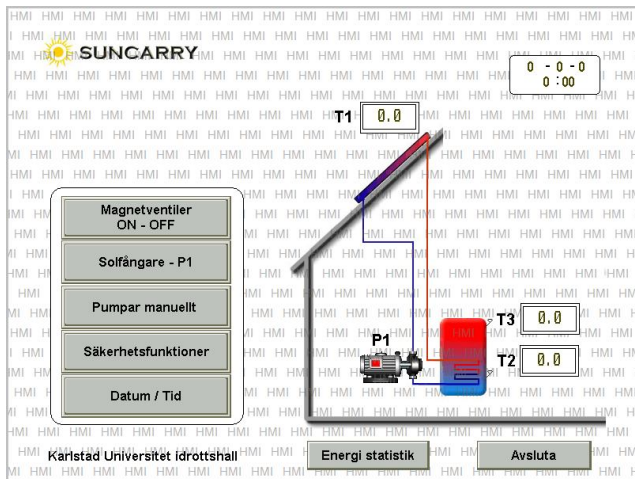


Energy measurement, per day, total, by month and year, in real time, temp differential T5-T6

Change Settings



Click on Settings, enter the password: xxxx and press ENT



In the Options Menu

Solenoid valves: control the opening and closing temperatures
(normal value, open + 65 ° C and closes + 60 ° C)

Solar panels P1: controls circulation pump, start and stop
(normal value start + 8 ° C and stopped 4 ° C)

Pumps manually: manual control of outputs (pumps, solenoid valves)

Safety features: emergency stop and emergency cooling
(normal value emergency + 130 ° C and start + 120 ° C)

(normal value emergency cooling start + 95 ° C and stop + 91 ° C)

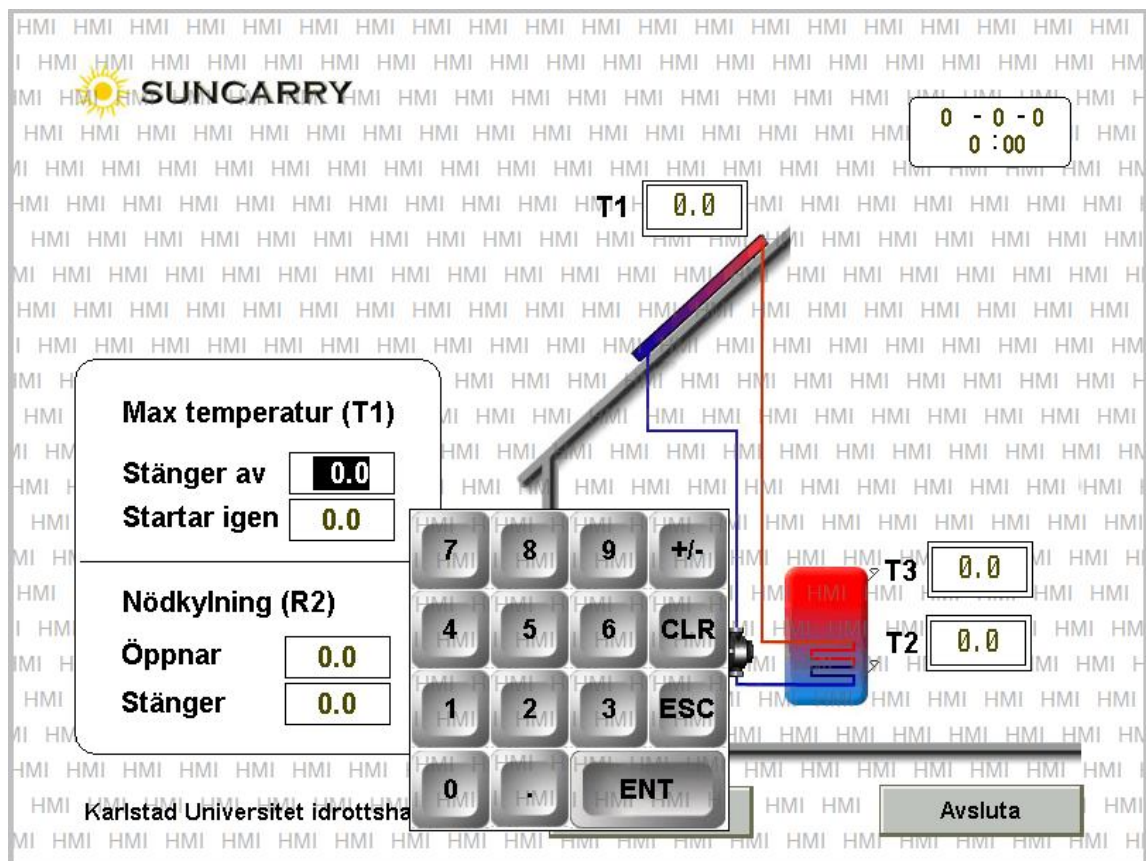
Date / Time: Setting the Date and Time

Energy statistics: Expanded information on the energy measurement and operating times.

Change the value of

Pressure in the box that you wish to change

Note only frames with simple lines can be changed, frames with double bars cannot be changed



Keyboard menu appears.

1st Press the numbers desired

2nd Finish with ENT

